
Haumea-T

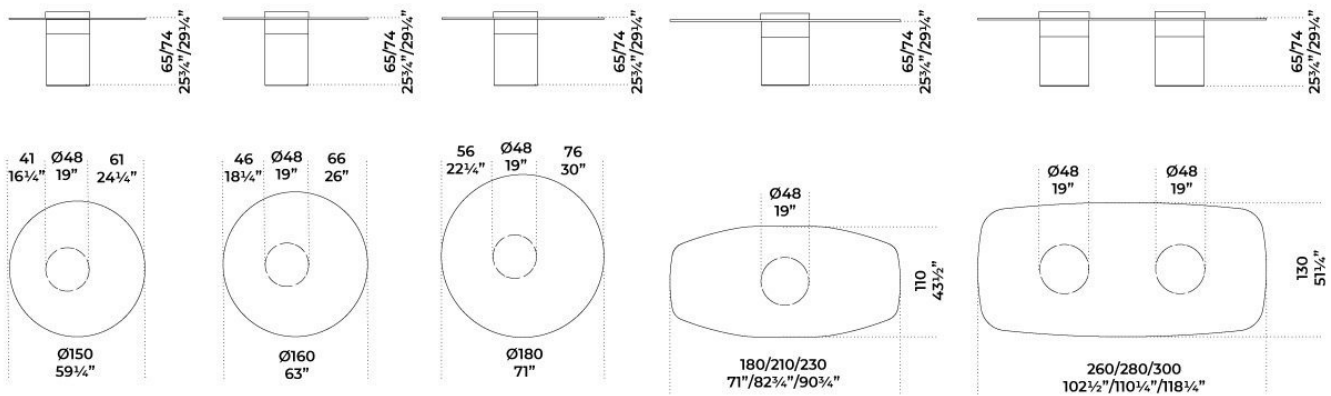
Massimo Castagna



Tavolo con piano in cristallo trasparente temperato 15mm. Base in frassino tinto nero poro aperto, bianco poro aperto o laccato ruggine. Cilindro centrale in metallo ottonato lucido, brunito a mano, ramato, cromato nero, laccato bianco o nichelato lucido. Ciotola disponibile in ottone lucido, ottone cromato nero, ottone nichelato lucido o ottone laccato bianco. Vassoio amovibile. Disponibile nelle combinazioni elencate nell'immagine. Su richiesta piano in cristallo "Grigio Italia" temperato 12mm. Per piani di dimensioni superiori a 260cm sono previste 2 basi. Disponibile su richiesta versione lounge cm 65h.

Table with 15mm transparent tempered glass top. Black or whit open pore stained ash or rust lacquered wooden base. Central cylinder in bright brass-plated, hand burnished, copper-plated, black chromed, white lacquered or bright nickel-plated metal. Bowl available in bright brass, black chromed brass, bright nickel-plated brass or white lacquered brass. Removable tray. Available in the combinations in the picture. 12mm smoked "grigio Italia" tempered glass top, on request. For glass tops larger than 260cm, two bases are provided. Lounge version height cm 65, available on request.

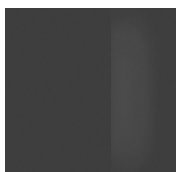
Dimensioni / Sizes
Cm (Ø x H)
150 x 74
160 x 74
180 x 74
150 x 65 Lounge
160 x 65 Lounge
180 x 65 Lounge



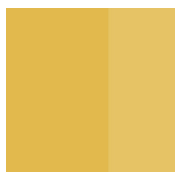
	A	B	C
COMB. 1	Ottone lucido Bright brass	Ottone brunito Burnished brass	Frassino tinto nero poro aperto Black open pore stained ash
COMB. 2	Ottone lucido Bright brass	Ottone lucido Bright brass	Ruggine Rust
COMB. 3	Ottone cromato nero Black chromed brass	Ottone cromato nero Black chromed brass	Frassino tinto nero poro aperto Black open pore stained ash
COMB. 4	Ottone cromato nero Black chromed brass	Ottone ramato Coppered brass	Ruggine Rust
COMB. 5	Ottone cromato nero Black chromed brass	Ottone brunito Burnished brass	Ruggine Rust
COMB. 6	Ottone cromato nero Black chromed brass	Ottone brunito Burnished brass	Frassino tinto nero poro aperto Black open pore stained ash
COMB. 7	Ottone nichelato lucido Bright nickel-plated brass	Metallo nichelato lucido Bright nickel-plated metal	Bianco poro aperto White open pore
COMB. 8	Ottone laccato bianco opaco Mat white lacquered brass	Metallo laccato bianco lucido Glossy white lacquered metal	Bianco poro aperto White open pore



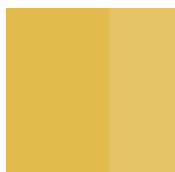
Metallo / Metal



Cromo nero
Black chrome



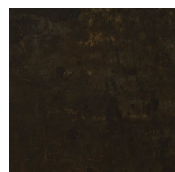
Ottone lucido
Bright brass



*Metallo
ottonato*
Brassed metal

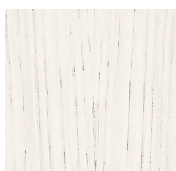


Ottone ramato
Coppered brass

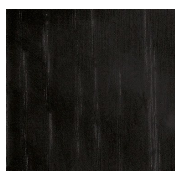


*Metallo
brunito a mano*
*Hand
burnished
metal*

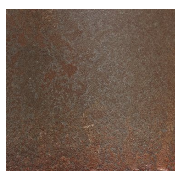
Legno / Wood



*Bianco poro
aperto*
*White open
pore*

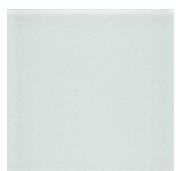


*Nero poro
aperto*
Black open pore

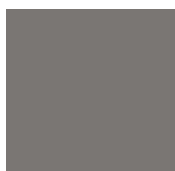


Ruggine
Rust

Cristallo / Glass



Trasparente
Transparent



"Grigio Italia"
"Grigio Italia"