

# DESALTO



## Paper

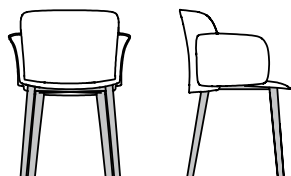
Cristian Gori · 2018

Osservando con attenzione, la seduta, i braccioli e lo schienale, sembrano quasi dei petali, mentre le gambe sottili ricordano dei lunghi steli: come un prezioso origami.



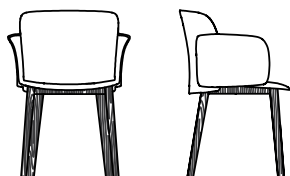
## Modelli disponibili

Seduta in polipropilene caricato a fibra di vetro, disponibile in 3 versioni:  
piantana centrale girevole con base a 4 razze; 4 gambe in tubolare d'acciaio; 4 gambe in legno a sezione ellittica.



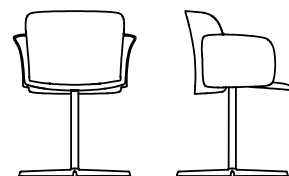
Paper - struttura acciaio gambe ellittiche

larghezza 59 cm  
profondità 55 cm  
altezza bracciolo 69 cm  
altezza totale 78 cm  
altezza seduta 45 cm



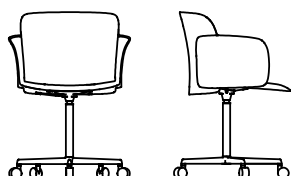
Paper - struttura rovere massello

larghezza 59 cm  
profondità 55 cm  
altezza bracciolo 69 cm  
altezza totale 78 cm  
altezza seduta 45 cm



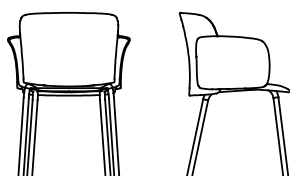
Paper - struttura centrale

larghezza 61 cm  
profondità 61 cm  
altezza bracciolo 69 cm  
altezza totale 78 cm  
altezza seduta 45 cm



Paper - struttura girevole altezza variabile con ruote

larghezza 67 cm  
profondità 64 cm  
altezza bracciolo 68/75 cm  
altezza totale 77/84 cm  
altezza seduta 44/51 cm



Paper - struttura acciaio gambe tonde OUTDOOR

width 59 cm  
depth 55 cm  
altezza bracciolo 69 cm  
altezza totale 78 cm  
altezza seduta 45 cm

## Finiture

### SEDUTA

#### Polipropilene



F18 BIANCO



F37 CURRY



F38  
TORTORA



F39 NERO



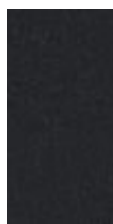
F46  
PETROLIO



F71  
RUGGINE



F73  
MARRONE  
BUNGEE



F77  
GRAFITE



F78 VERDE  
MOSS

### STRUTTURA

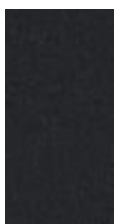
#### Laccature



B22  
MARRONE  
BUNGEE



B41  
TORTORA



B42  
GRAFITE



B54  
PETROLIO



B56  
RUGGINE



B59 NERO  
OPACO



B62  
BIANCO  
OPACO



B81 CURRY



B85 VERDE  
MOSS

## Metalli

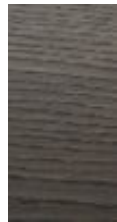


A08  
ALLUMINIO  
LUCIDO

## Essenze



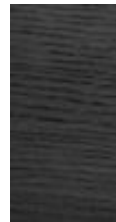
C68  
ROVERE  
MORO



C76  
ROVERE  
GRAFITE



C88  
ROVERE  
NATURALE



C14  
ROVERE  
LACCATO  
NERO

## CUSCINO

### Pelle



M50  
BIANCO



M52 TESTA  
DI MORO



M53 NERO



M55 ROSSO



M58  
BORDEAUX



M59  
SABBIA



M61 PANNA



M69  
ZAFFERANO

Pelle - NUVOLA



M73 NEVE



M74 BRUNO



M75 OASI



M76  
TABACCO



M77 NERO



M78  
CAMELIA



M79 KAKI



M80  
BORDEAUX

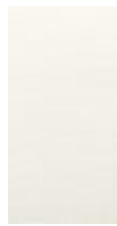


M81  
ANTRACITE

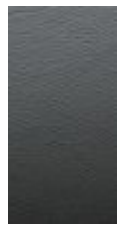
Eco pelle



R16 CAFFÈ



R02  
BIANCO



R06  
ANTRACITE



R07 ECRU



R18 ROSSO



R19  
AMARANTO



R29 NERO

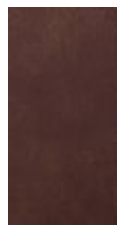
Ecopelle - GRAIN



R40  
COGNAC



R41 FUMO



R42  
TABACCO



R43  
ARDESIA



R44  
CARBONE



R45  
SAHARA

Ecopelle - GLOVE



R46 LATTE



R48 PIETRA



R49 PELTRO



R51 BISTRO



R52 MORO



R53 BRUNO



R54 CUIOIO



R55  
CANNELLA



R56 OLIO



R57  
GRANATA

Tess. DANDY (Cat. A)



H65 CORDA



H66 ECRU



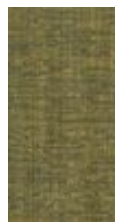
H67  
TORTORA



H68  
MELOGRANO



H69 TORBA



H70  
PAGLIERINO



H71 GIADA



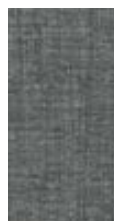
H72  
TURCHESE



H73 DENIM



H74  
ANTRACITE



H75 FUMO

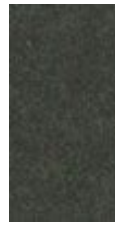


H76 FANGO

Tess. LODEN (Cat. A)



H77 IUTA



H78 MOCA



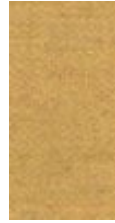
H79 PECE



H80  
GRANITO



H81 BRINA



H82  
BANANA



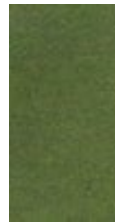
H83  
ARAGOSTA



H84  
VERMIGLIO



H85 BOSCO



H86  
PISTACCHIO



H87 CIANO



H88  
INCHIOSTRO

Tess. SOFTY (Cat B)



H27 GESSO



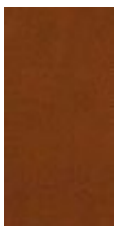
H28 CIPRIA



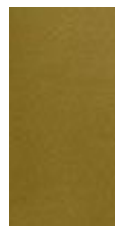
H29  
MARSALA



H36  
PAPAYA



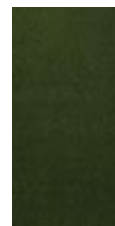
H37  
NOCCIOLA



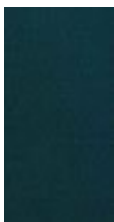
H38 CEDRO



H39  
CILIEGIA



H46  
MUSCHIO



H47  
PAVONE



H48  
OCEANO



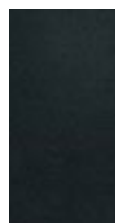
H49 VISIONE



H51 CAFFÈ



H52 TITANIO



H53  
ARDESIA

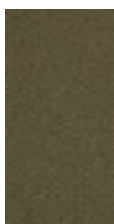
Tess. MESSENGER (Cat. C)



T86 CENERE



T87  
CANAPA



T88  
TORTORA



T89 ROSA  
PASTELLO



T90  
SENAPE



T91  
TERRACOTTA



T92  
SCARLATTO



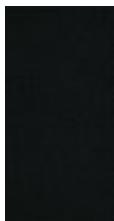
T93  
FORESTA



T94  
OTTANIO



T95  
PRUSSIA



T96  
CARBONE



T97  
ACCIAIO



T98 NERO