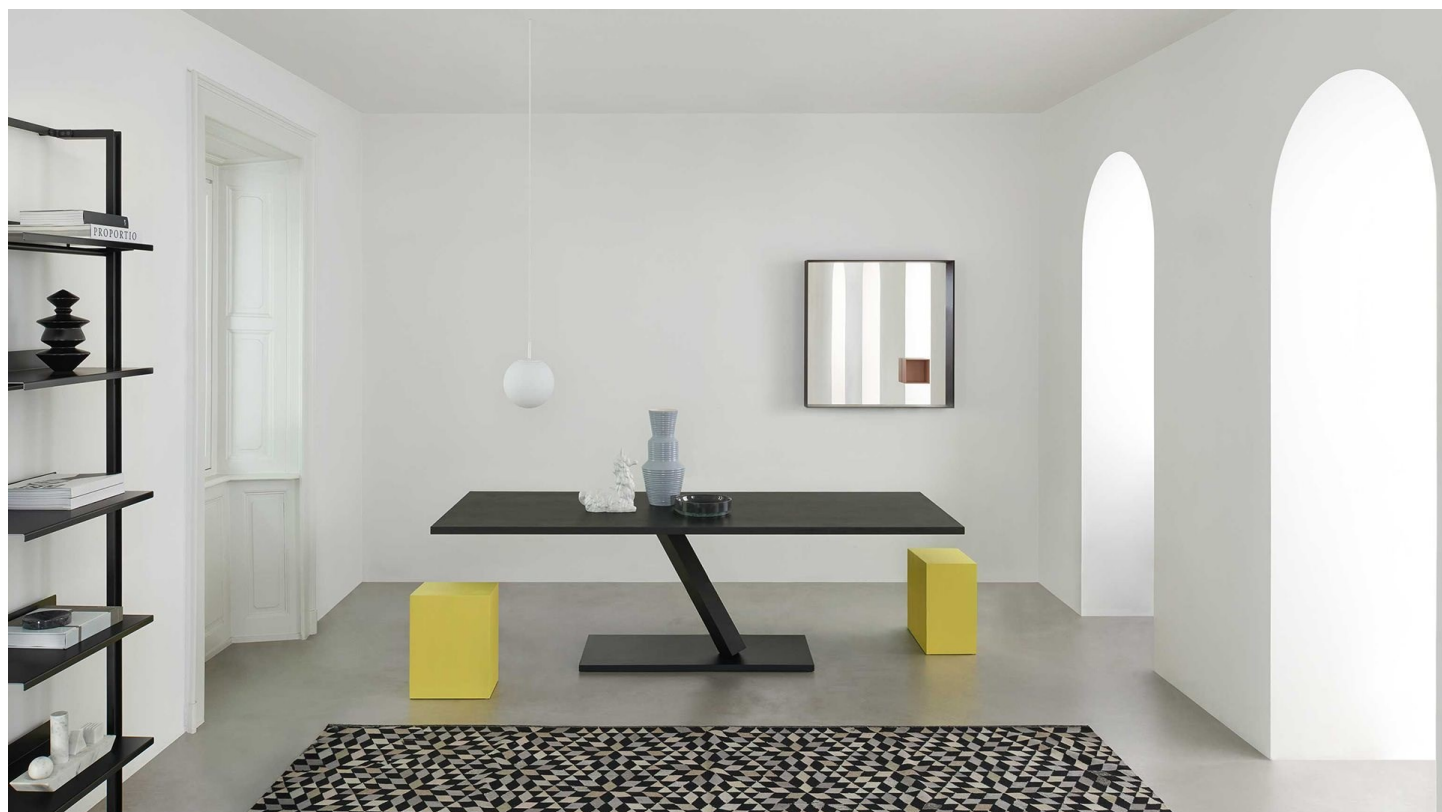


# DESALTO



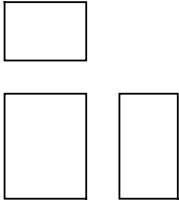
## Unus

Elisa Ossino · 2014

The intrinsic materic character of the artisan finishes and the rigorous shape give this monolite an austere elegance. Perfect proportions to be an accessory seating or a useful side table.

## Available models

Small table-seating in MDF covered with hand-spread resin.



Unus

width 25 cm  
depth 35 cm  
height 45 cm

# Finishing

## Structure

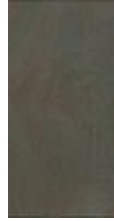
### Handcraft finishes



A90 METAL  
GREY



D60  
MATTONE  
RED  
CONCRETE



A92 METAL  
BRONZE



D62 COURT  
GREY



D63 DUOMO  
WHITE



D64 TUFO  
STONE



D65 LUNA  
GREY  
CONCRETE



D66 BLACK  
CONCRETE



D67 LAVA  
STONE



D61 WHITE  
CONCRETE



D55 REALE  
BLUE  
CONCRETE



D57 OCRA  
CONCRETE



D56  
ARDESIA  
CONCRETE



D58  
GHIACCIO  
CONCRETE



D59 CACAO  
CONCRETE

