

DESALTO



Strong Stool

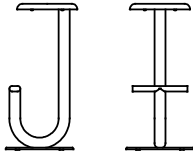
Eugeni Quitllet · 2019

The clean, consistent design of Eugeni Quitllet adopts and characterises the curved steel tube which becomes the structural core of Strong collection.



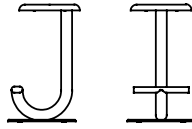
Available models

Structure in three heights (74 / 90 / 105 cm) in Ø60 mm curved tubular steel, with top in shaped steel sheet or marble. *Version with top in sheet metal and marble, suitable for outdoor use.*



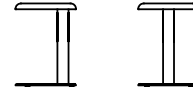
STRONG
stool - H.80

width 37 cm
depth 39 cm
seat hight 80 cm



STRONG
stool - H.64

width 37 cm
depth 39 cm
seat hight 64 cm



STRONG
stool - H.45

width 33 cm
depth 33 cm
seat hight 45 cm

Finishing

Seduta

Lacquers



B13
SABBIA



B22
MARRONE
BUNGEE



B42
GRAFITE



B54
PETROLIO



B56
RUGGINE



B59 NERO
OPACO



B62
BIANCO
OPACO



B70 ROSSO
LAMPONE



B81 CURRY

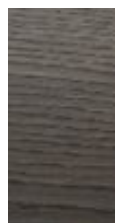


B85 VERDE
MOSS

Wood



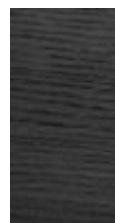
C88
NATURAL
OAK



C76 OAK
GRAFITE



C68 OAK
MORO



C14 OAK
BLACK
LACQUERED

Struttura

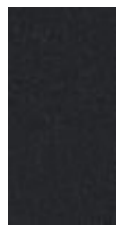
Lacquers



B13
SABBIA



B22
MARRONE
BUNGEE



B42
GRAFITE



B54
PETROLIO



B56
RUGGINE



B59 NERO
OPACO



B62
BIANCO
OPACO



B70 ROSSO
LAMPONE



B81
CURRY



B85 VERDE
MOSS