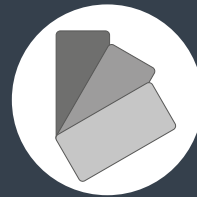




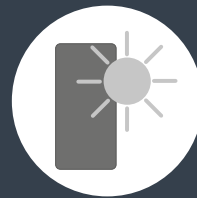
Vernici | Paints | Lacke | Peintures | Pinturas

Le vernici utilizzate sono a base acqua a basso impatto ambientale, laccato opaco finitura satinata, antiimpronta, resistente ai graffi. Laccato lucido spazzolato a base solvente. Le essenze hanno una verniciatura a poro aperto. / The paints employed are low-residue ones and atoxic. For the wood and lacquered matt finishes, water-borne paints are used. For the lacquered gloss finishes solvent-based paints are used. The wood finish is an open-pore transparent one. / Die verwendeten Lacke sind wasserlöslich mit niedriger Umweltauswirkungen, satinierte Mattausführung, anti-fingerdruck, kratzfest. Für die polierte Hochglanzlacke mit Lösungsmittel, offenporige Lackierung bei den Hölzern. / Les peintures utilisées sont à l'eau et à faible résidu, laquée mat finition satinée, antitache et résistante aux griffures. Laquée brillant brossé à solvant. Le bois ont une peinture pore ouverte. / los barnices utilizados son a base de agua con bajo impacto ambiental, laca mate acabado satinado, anti-huella digital, resistente a los arañazos. Laca brillo polida a base de solvente. Las maderas están lacadas de poro abierto.



Laccato a campione | Custom colour | Kundenfarbe | Laque couleur echantillon | Color cliente

Scala ral completa o tinta a campione con maggiorazione del 20%. / Full Ral Scale or custom colour with surcharge of 20%. / Alle Farben der ral-scala gegen Aufpreis vom 20%. / Nauncier Ral complet ou teinte échantillon avec augmentation du 20%. / Full Ral Scale or custom colour with surcharge of 20%. / Todos los colores de la escala ral con recargo de 20%.



Tinte | Shades | Kundenfarbe | Teintes | Colores

Le tinte di questo campionario colori possono subire, nel tempo, lievi alterazioni dovute all'azione della luce e dell'invecchiamento. Sono pertanto da ritenersi indicative. / The shades of this colour card may suffer slight variations due to light exposure and ageing. Therefore, consider them merely indicative. / Alle Farben dieser Musterkarte koennen im Laufe der Zeit leichten Aenderungen unterliegen aufgrund der Einwirkung vom Licht und Veralterung. Daher sind sie als hinweisend zu betrachten. / Les teintes de ce nuancier peuvent changer ,dans le temps. petites altérations dues à la lumière et au vieillissement. Elles sont donc indicatives. / Los colores de esta carta pueden sufrir a lo largo del tiempo lieves alteraciones, debidas a la acción de la luz y el envejecimiento. Por lo tanto deben considerarse como indicativos.



finiture colours & finishes

LACCATI OPACO / VETRI SATINATO

Matt lacquers/Satin glasses, Mattlacke/Satinierte Gläser, Laqué mat/Verre satiné, Lacas mate/Cristales satinados



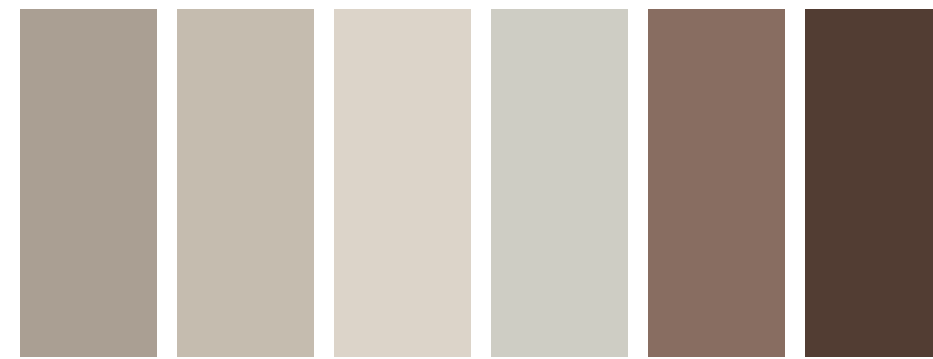
9003 Bianco
9010 Panna
9001 Crema
1013 Fior di loto
135 Giallo zinco
140 Giallo cromo
2010 Biscotto
173 Bruciato
3001 Rosso acceso
3003 Rosso



3005 Rosso bordeaux
6002 Verde foglia
192 Verde pompelmo
190 Verde pallido
246 Grigio garda
253 Lavanda
5021 Verde petrolio
199 Verde finlandia
5010 Blu genziana
7016 Grigio antracite



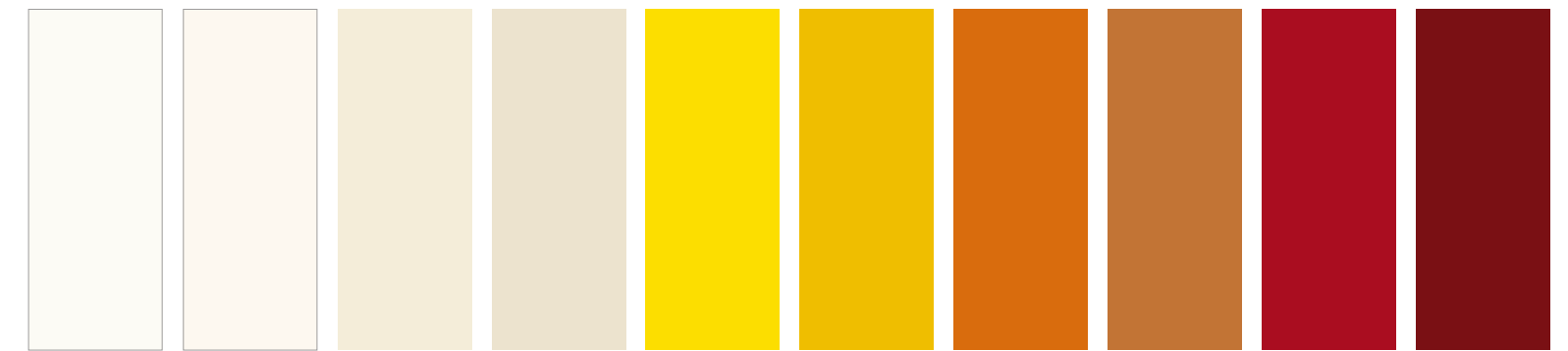
Y23923 Carta da zucchero
252 Grigio polvere
255 Blu piombo
9017 Nero
7035 Grigio chiaro
9002 Ghiaccio
238 Grigio perla
7044 Grigio seta
7039 Grigio aston
Y18232 Dark grey



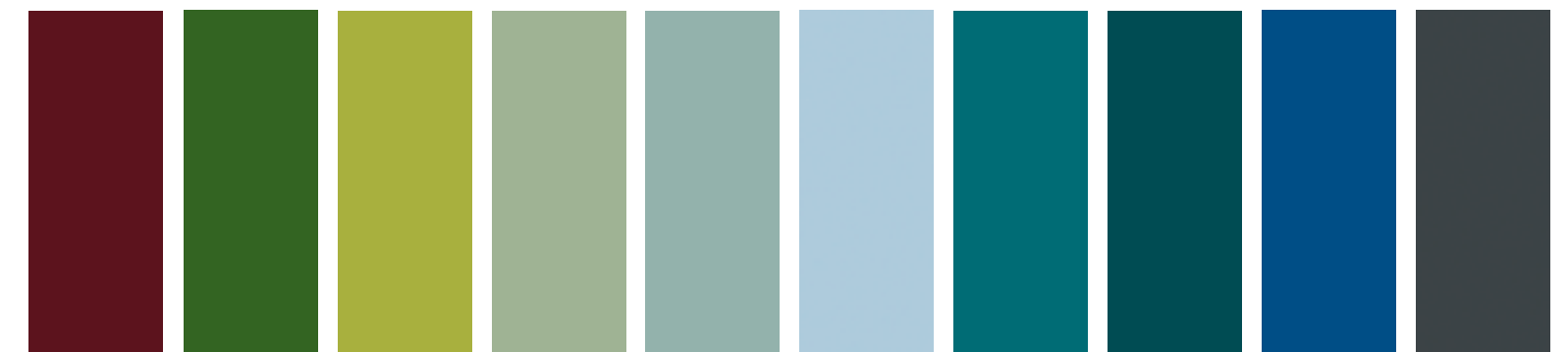
Y20261 Corda
Y20259 Canapa
Y20260 Tortora
Y18231 Light grey
Y23919 Terracotta
Y23918 Moka

LACCATI LUCIDO / VETRI LUCIDO

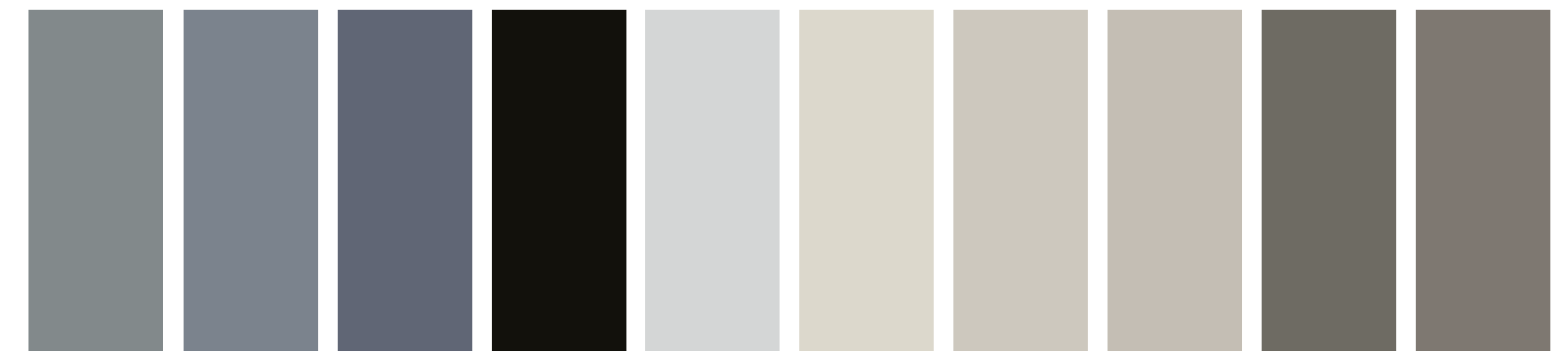
Glossy lacquers/Glossy glasse, Hochglanzlack/Kristal hochglanz, Laqué brillant/Verre brillant, Laca brillo/Cristal brillo



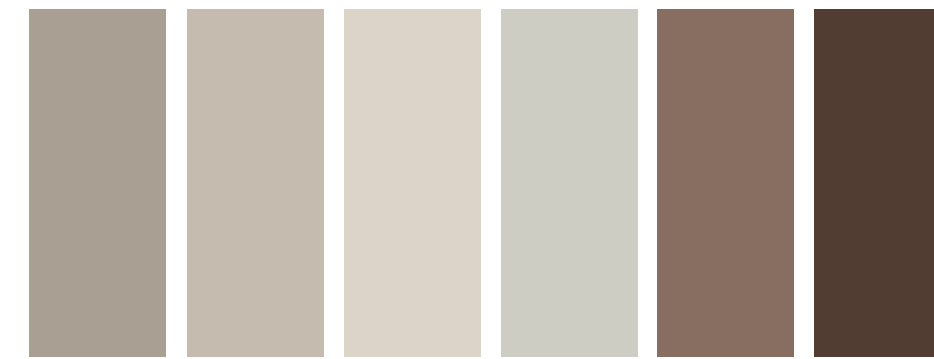
9003 Bianco
9010 Panna
9001 Crema
1013 Fior di loto
135 Giallo zinco
140 Giallo cromo
2010 Biscotto
173 Bruciato
3001 Rosso acceso
3003 Rosso



3005 Rosso bordeaux
6002 Verde foglia
192 Verde pompelmo
190 Verde pallido
246 Grigio garda
253 Lavanda
5021 Verde petrolio
199 Verde finlandia
5010 Blu genziana
7016 Grigio antracite



Y23923 Carta da zucchero
252 Grigio polvere
255 Blu piombo
9017 Nero
7035 Grigio chiaro
9002 Ghiaccio
238 Grigio perla
7044 Grigio seta
7039 Grigio aston
Y18232 Dark grey



Y20261 Corda
Y20259 Canapa
Y20260 Tortora
Y18231 Light grey
Y23919 Terracotta
Y23918 Moka

IMPIALLACCIATI

Wood veneers, Holzfurnier, Placage bois, Chapa



Rovere nodi ER5



Rovere gesso ET4



Rovere visone ET5



Rovere cenere ET3



Rovere castoro ET2



Rovere termotrattato ER6

ANTE VETRO

Glass doors, Glastueren, Portes en verre, Puertas de cristal



Specchio SPC



Trasparente grigio TRG



Vintage VVT

LACCATI EFFETTO RESINA

Resin effect lacquer finish, Lacke resineffekt, Effet résine, Lacas efecto resina



Light grey H716



Dark grey H726



Tortora H63



Terracotta H74

LACCATI METALLICI

Metal effect lacquers, Lacke metalleffekt, Laqués métalliques, Lacas efecto metálico



Titanio UTIT



Nichel UNIK



Piombo UPMB



Ossido ottone UOTN



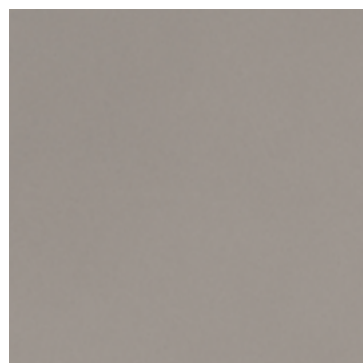
Ossido bronzo UBRN

LACCATI MICALIZZATI

metallic lacquers, Lacke micaeffekt, Laqués nacréés, Lacas efecto mica



Titanio OTIT



Nichel ONIK

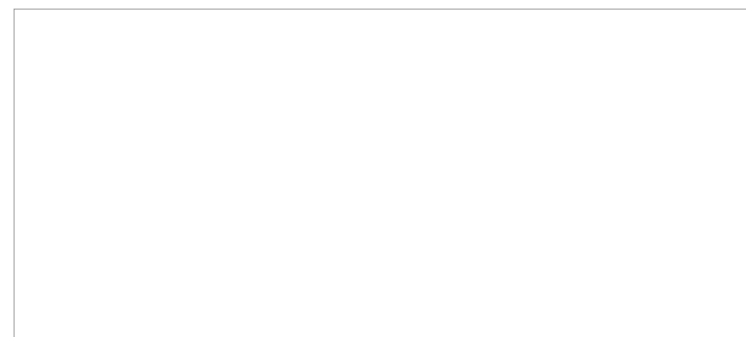


Piombo OPMB

LAMINATI / MELAMINICI

Laminate/Melamines, holzfurniert, bois, enchapado

Finitura materica _ Textured finish, Melaminausführung, Finition mélaminé, Acabado melamina



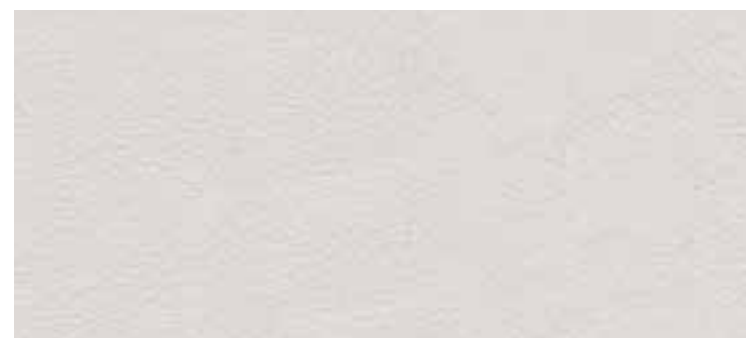
050 Bianco



036 Olmo corda



035 Olmo bianco



015 Malta ghiaccio



016 Malta tortora

(SOLO MOD. 45°/SIDÉRO)

Only mod. 45°/Sidéro, Nur mod. 45°/sidéro, Seulement modèle 45°/Sidéro, Solo para mod. 45°/Sidéro



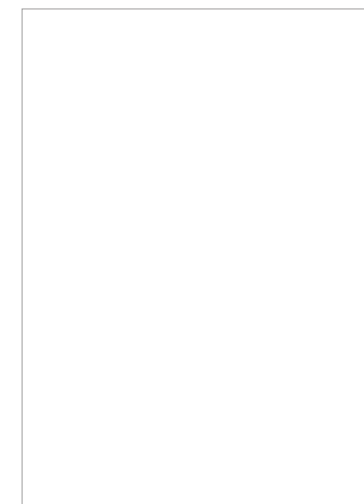
027 Rovere nodi chiaro



028 Rovere nodi scuro

FINITURA ALLUMINIO / PIANO INOX VERNICIATO

Aluminium finish/Varnished stainless steel top, Ausführung aluminium/Lackierte platte, Finition alu/Plan en inox vernished, Abacado aluminio/Encimera inox barnizado



641 Bianco



642 Ottone



643 Titanio



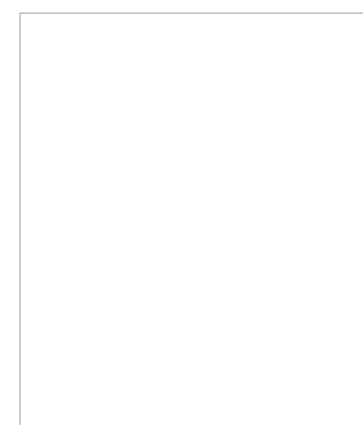
644 Nero

CERAMICA

Ceramic, Keramik, Cerlamine, Cerámica



Bianco opaco



Bianco lucido



Arancio cameo



Blu zaffiro



Grigio oliva



Nero opaco



Platino



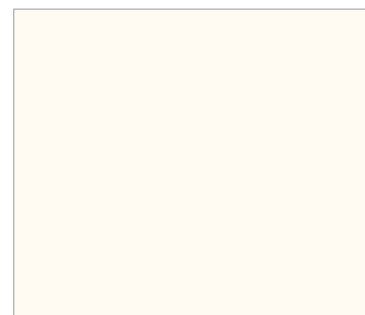
Oro

PIANI MARMO MINERALE

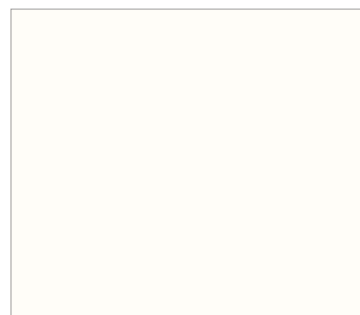
Mineral marble, Mineral Marmor, Marbre Mineral, Marmol mineral



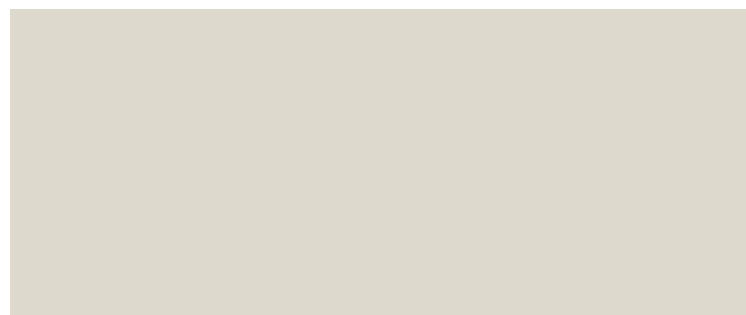
* Nano-tecnologia, Nanotechnology protection, Nanotechnologischer Schutz, Protection nanotechnologique, Protección nanotecnológica



570 Bianco lucido



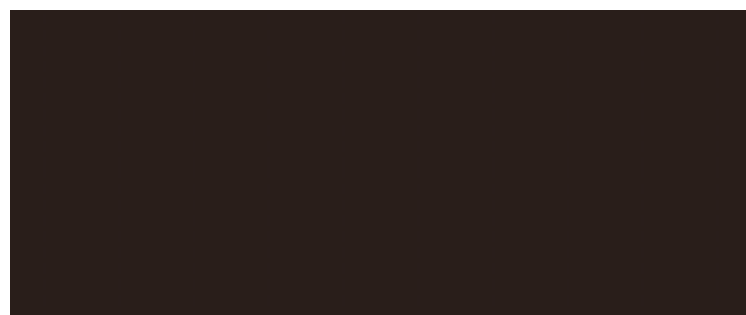
571 Bianco opaco



588 Ghiaccio opaco



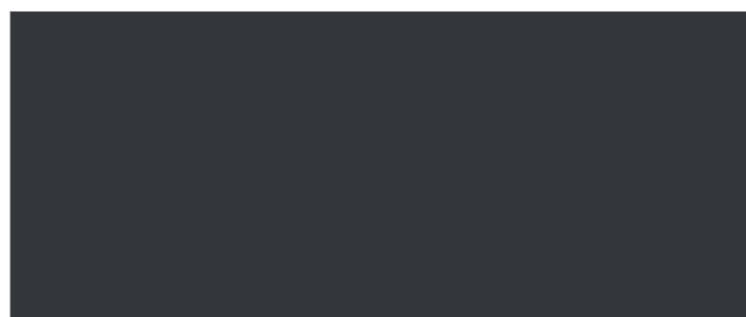
584 Grigio opaco



585 Moka opaco



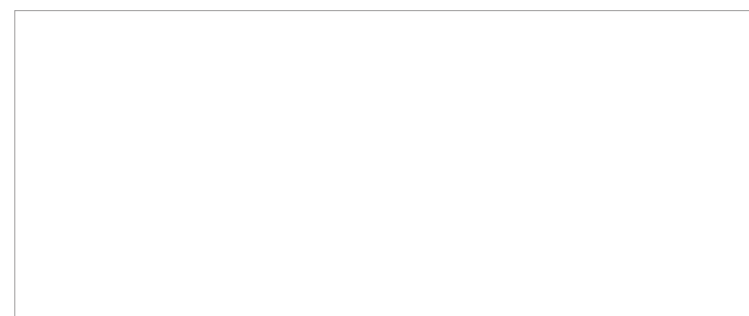
586 Tortora opaco



587 Antracite opaco

PIANI CORIAN®

Tops in corian®, Platten in corian®, Plan En corian®, Encimeras en corian®



555 Glacier white

PIANI MARMO

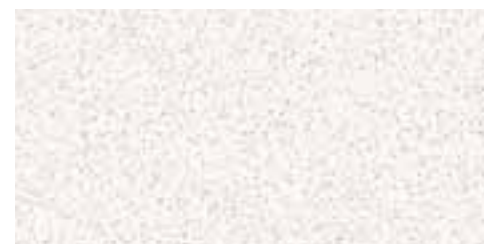
Marble tops, Platten aus Marmor, Plans en marbre, Encimeras de mármol

Categoria A

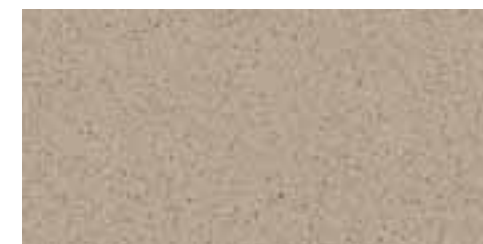


401 Bianco carrara N L/O 20

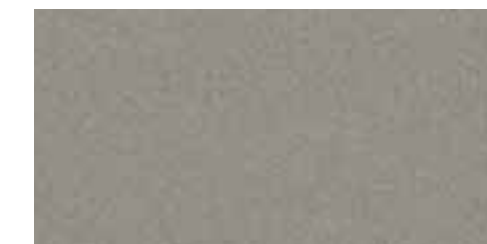
Categoria B



483 White storm TL12

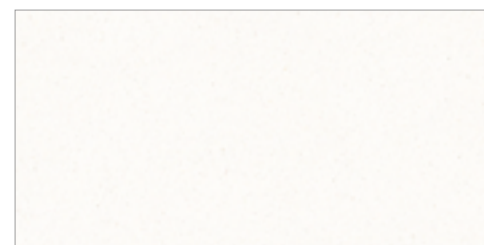


484 Rogui TL12

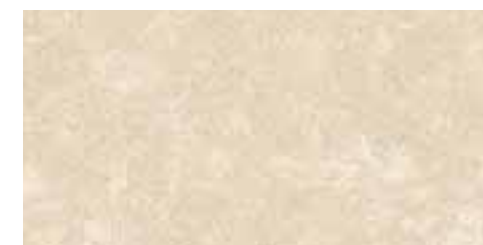


479 Gaja grey N O/S 20

Categoria C



486 Blanco zeus T O/L 12



487 Tigri sand TL12



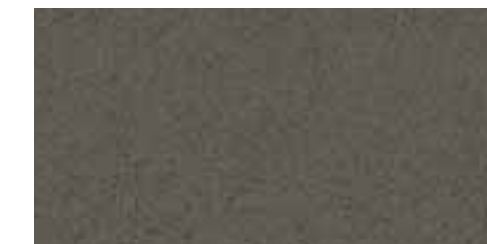
488 Unsui T L/O 12



489 Kensho T L12



490 Grafite N L/O 20



485 Cemento TL12

Categoria D



492 Dark emperador N L/O 20



493 Nero marquinia N L/O 20



494 Rosso verona N L/O 20

Legenda: T=marmo tecnico / N=marmo naturale / L= finitura lucida / O=finitura opaca / S = finitura spacco / 20=piano sp.20 mm. / 12= piano sp.12 mm.

Key: T=technical marble / N= natural marble / L= glossy finish / O= matt finish / S= split finish / 20= top th.20 mm. / 12= top th.12 mm.

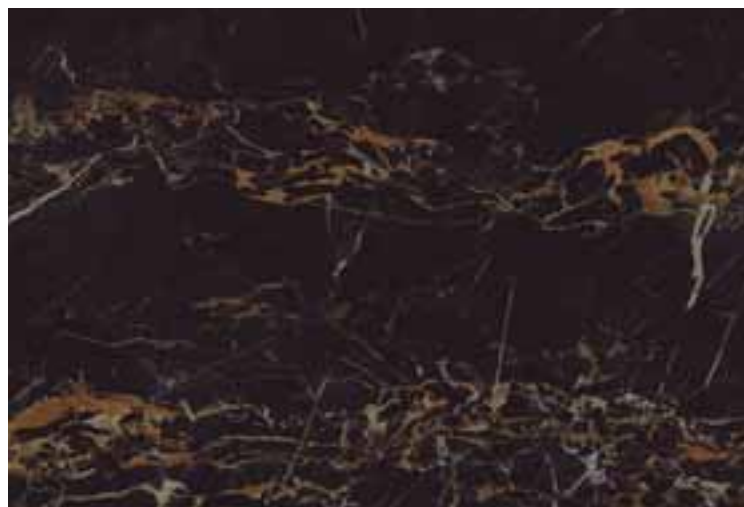
Anzeige: T= technische Marmor / N= natural Marmor / L= Hochglanz/O= Matt / S= Ausf.gespaltet / 20= Platte St.20 mm. / 12= Platte St.12 mm.

Légende: T=marbre technique / N=marbre naturel / L= finition brillante / O= finition mate / S= finition fente / 20=plan ép. 20 mm. / 12= plan ép.12 mm.

Clave: T=mármol técnico / N=mármol natural / L= acabadi brillo / O= acabado mate/S= acabado partido / 20= encimera esp. 20mm. / 12= encimera esp.12 mm.

PIANI GRES PORCELLANATO

Porcelain stoneware tops, Platten porzellangres, Plan céramique, Encimeras cerámica



Nero portoro 621



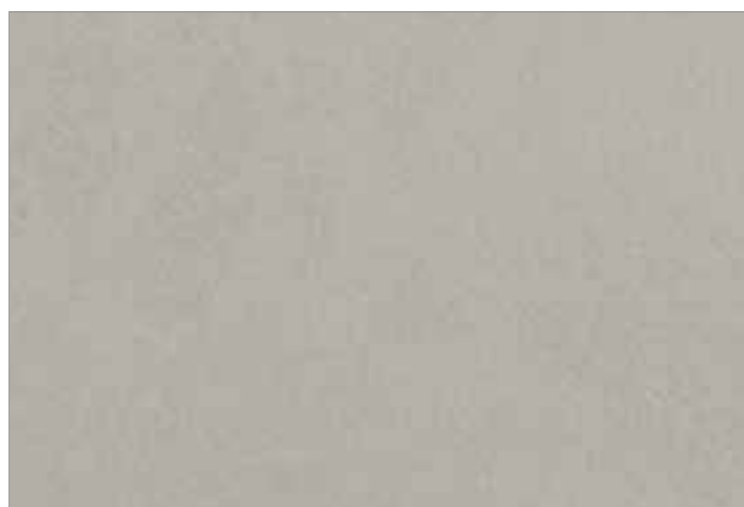
Calacatta oro 622



Spatolato amber 623



Spatolato ivory 624



Spatolato silver 625



Spatolato plumb 626

PIANI ARGILLA

Clay tops, Platten Lehm, Plans argile, Encimeras arcilla



Rosso bollo 631



Sabbia 632



Ardesia 633



Cioccolato 634



Polvere 635



Grafite 636